



*Make a  
Difference  
in your  
Community*

## In Healthcare You Will

- Have many career choices
- Find jobs throughout Alaska
- Provide care, comfort and compassion
- Be part of a team
- Become highly skilled
- Earn a good salary
- Be a role model

*For More Information  
about your  
Career Interest*

**Discover Nursing**  
[www.discovernursing.com](http://www.discovernursing.com)

**Pharmacy Technician Certification Board**  
Tel. (202) 429-7576  
[www.ptcb.org](http://www.ptcb.org)

**The American Society of Radiologic Technologists**  
Tel. 1-800-478-5389  
[www.asrt.org](http://www.asrt.org)

**Alaska's UAA partnership thru WWAMI for Physicians**  
Tel. 907-786-4789  
[www.biomed.uaa.alaska.edu](http://www.biomed.uaa.alaska.edu)

**Alaska Center For Rural Health (Part of UAA)**  
Tel. 907-786-6592  
[www.healthcareersinAlaska.info](http://www.healthcareersinAlaska.info)

**Alaska Vocational Technical Center**  
Tel. 1-800-478-5389  
[www.avtec.alaska.edu](http://www.avtec.alaska.edu)

**Alaska Job Corps Center**  
Tel. 1-800-478-0531  
[www.alaskajobcorps.com](http://www.alaskajobcorps.com)

**Alaska Dept. of Labor and Workforce Development  
Research and Analysis Section**  
Tel. 907-465-4585  
[www.labor.alaska.gov/research/occtbl/pdfs/health.pdf](http://www.labor.alaska.gov/research/occtbl/pdfs/health.pdf)  
[www.labor.state.ak.us/research/wage/swoes.htm#healths](http://www.labor.state.ak.us/research/wage/swoes.htm#healths)

**Alaska State Hospital &  
Nursing Home Association**  
426 Main Street • Juneau, AK 99801 • 907-586-1790  
943 W. 6th Ave • Anchorage, AK 99501 • 907-646-1444

[www.ashnha.org](http://www.ashnha.org)

# ASHNHA



**Careers in Health Care**

*Taking you  
where  
you want  
to go*

**ASHNHA**  
Alaska State Hospital and Nursing Home Association

## Physical Therapy



- Diagnoses and treats patients who have limited abilities to move and perform functional activities in their daily lives.
- Provide examinations and plans using treatment techniques to promote the ability to move, reduce pain, restore function, and prevent disability.
- Provides instruction and home programs to patients and their families to continue the recovery process after therapy has ended.
- Work in special interest areas such as sports medicine, cardio-pulmonary related problems, or neurology.
- Average starting wage: \$29.25



## Nurse Practitioner (NP)

- Has advanced education and clinical training in specialty areas
- Provides prenatal care and family planning services, well-child care, annual exams for adults, and health counseling and prevention services.
- Works independently or with physicians in a variety of settings, including hospitals, clinics, or schools.
- Training available at University of Alaska
- Average Hourly wage: \$25.11 - \$47.39



## Nurse

- Combines compassion and science when helping patients
- Administers medication
- Works in hospitals, clinics and medical offices
- Educational programs available at University of Alaska
- Average starting wage: \$26.49



## Medical Assistant

- Multi-skilled and work primarily in medical offices and clinics
- Work under the supervision of physicians in their offices or other medical settings
- Perform administrative and clinical duties
- Enjoys working with people and technology
- Training at University of Alaska
- Average starting wage: \$13.07



## Respiratory Therapist

- Assists patient with breathing
- Performs diagnostic studies and tests
- Works with all types of patients and has high energy
- Completes a 2 to 4 year training program
- Average starting wage: \$23.11 per hour



## Radiology Technician

- Takes and develops X-ray films
- Interacts with patients and educates them on procedures
- Enjoys working with people and technology
- Training available at University of Alaska
- Average starting wage: \$22.50 per hour



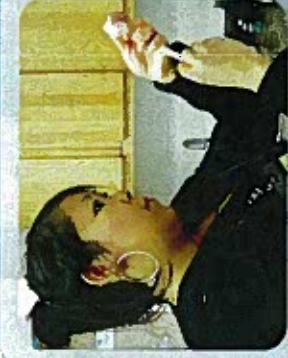
## Pharmacy Technician

- Prepares medications and assists the pharmacist
- Possesses strong organizational skills
- Training available at University of Alaska
- On-the-job training available
- Average starting wage: \$13.44 per hour



## Certified Nursing Assistant (CNA)

- Assists patient with bathing, feeding and mobility
- Is able to work well with elders
- Is friendly, compassionate and skilled
- Has various training options available in Alaska
- Average starting wage: \$13.17 per hour



## Community Health Aide (CHA)

- Lives and works in remote areas
- Communicates with physicians by phone, radio or computer
- Take patients medical history, performs examinations and plans care
- Has the ability to work independently
- CHA is employed while in training
- Starting wage not available